

Heavy & Medium Duty Dump Trucks & Trailers

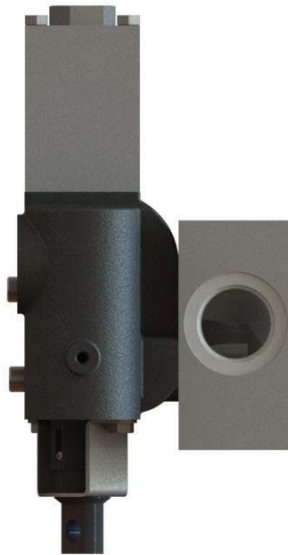
LIL TIPPER

Precision-Engineered Fluid Power Products

The Sensible Choice for Pumps

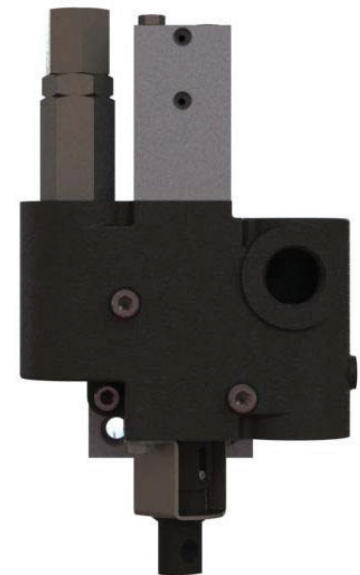


Dump Trucks
Walking Floor



Features

- Pump and cylinder protected in the "Raise" and "Neutral" position of the spool
- Manual shift or factory installed "OE" air shifts
- Built-in load check maintains dump body angle and is installed in the cylinder port for superior self-cleaning
- Built-in direct acting relief valve set at factory
- 100% factory tested relief valve
- SAE and NPT ports available
- Neutral lock-out safety cap for use with pull-off cable



DDKS
INDUSTRIES **.com**

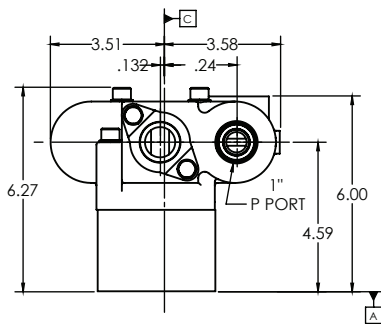


With Permco, it's personal

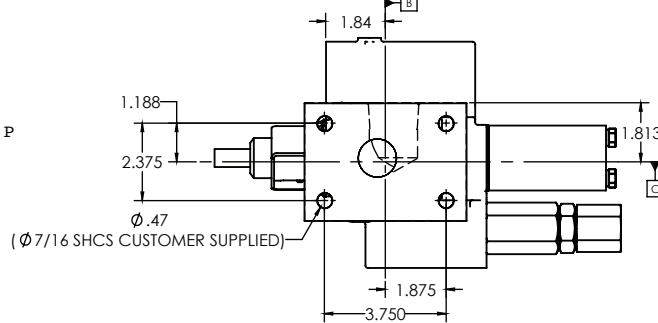
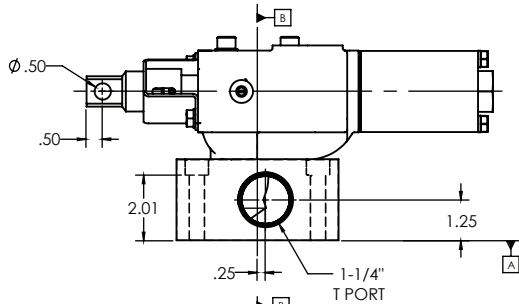
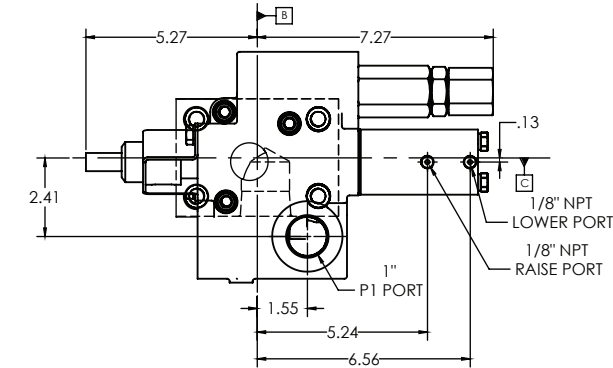
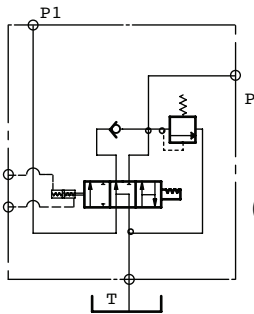


Dimensional Data (inches)

P	Outlet (to cylinder)
P1	Inlet (from pump)
T	Tank Line (Return to Tank)



AIR SHIFT



Permco is a leading manufacturer of high-pressure hydraulic gear/vane pumps and motors, flow dividers, intensifiers, and accessories. Available in a wide variety of sizes and configurations to suit your application needs.

Lil Tipper Code

TV - ORB - AS - 1 - **

Pressure Setting

- 20** 2000 psi
- 25** 2500 psi
- 30** 3000 psi

Tipping Valve

NPT - Ports
ORB - Ports

AS Air Shift
MS Manual Shift

- 1** RP-5514
- X** RP-5514-3000
- XX/XX** Gemini*

*25/32(2500/3200 psi) is the most common pressure setting for the Gemini. Other pressure settings are specified by the XX/XX. Example 20/28 = 2000/2800 psi

DDKS.com
INDUSTRIES
586-323-5909



With Permco, it's personal
www.permco.com



Permco USA | 1500 Frost Road | P. O. Box 2068 | Streetsboro, Ohio 44241

