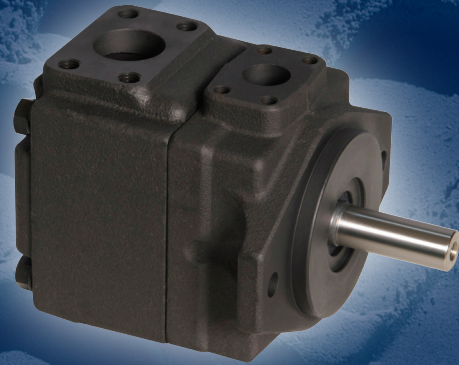
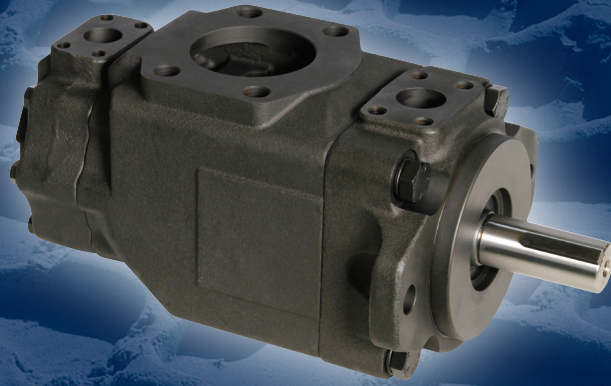


**DDKS**  
INDUSTRIES **.com**

# EVO Vane Products

Industrial and Mobile Applications



[www.permco.com](http://www.permco.com)

## EVO Vane Series Pumps Industrial and Mobile

PT6C	Cam Ring												
	003	005	006	008	010	012	014	017	020	022	025	028	031
GPM/1000 RPM/3500 PSI	1.35	3.04	3.38	4.73	6.76	7.56	9.91	13.16	14.61	16.33	18.70 <sub>(1)</sub>	21.50 <sub>(1)</sub>	24.46 <sub>(1)</sub>
LPM/1000 RPM/241 BAR	5.1	11.5	12.8	17.9	25.6	28.6	37.5	49.8	55.3	61.8	70.8 <sub>(1)</sub>	81.4 <sub>(1)</sub>	92.6 <sub>(1)</sub>
IN <sup>3</sup> /Rev	0.66	1.05	1.30	1.61	2.08	2.26	2.81	3.56	3.89	4.29	4.84	5.42	6.10
CC/Rev	10.8	17.2	21.3	26.4	34.1	37.1	46.0	58.3	63.8	70.3	79.3	88.8	100.0
Max PSI	4000	4000	4000	4000	4000	4000	4000	4000	4000	4000	4000	3000	3000
CONTINUOUS PSI	3000	3500	3500	3500	3500	3500	3500	3500	3500	3500	3500	2300	2300
MAX RPM	2800	2800	2800	2800	2800	2800	2800	2800	2800	2800	2500	2500	2500
MIN RPM	600	600	600	600	600	600	600	600	600	600	600	600	600

PT6D	Cam Ring											
	014	017	020	024	028	031	035	038	042	045	050	
GPM/1000 RPM/3500 PSI	8.48	12.63	13.34	16.91	19.60	21.87	25.23	27.69	31.83	34.40	38.30	
LPM/1000 RPM/241 BAR	32.1	47.8	50.5	64.0	74.2	82.8	95.5	104.8	120.5	130.2	145.0	
IN <sup>3</sup> /Rev	2.90	3.55	4.03	4.85	5.47	6.00	6.77	7.34	8.30	8.89	9.64	
CC/Rev	47.6	58.2	66.0	79.5	89.7	98.3	111.0	120.3	136.0	145.7	158.0	
Max PSI	3500	3500	3500	3500	3500	3500	3500	3500	3500	3500	3000	
CONTINUOUS PSI	3000	3000	3000	3000	3000	3000	3000	3000	3000	3000	2300	
MAX RPM	2500	2500	2500	2500	2500	2500	2500	2500	2200	2200	2200	
MIN RPM	600	600	600	600	600	600	600	600	600	600	600	

PT6E	Cam Ring								
	042	045	050	052	062	066	072	085	
GPM/1000 RPM/3500 PSI	30.43	33.10	37.35	39.02	47.45	51.83	55.48	70.03 <sub>(1)</sub>	
LPM/1000 RPM/241 BAR	115.2	125.3	141.4	147.7	179.6	196.2	210.0	265.1 <sub>(1)</sub>	
IN <sup>3</sup> /Rev	8.07	8.69	9.67	10.06	12.00	13.02	13.86	16.46	
CC/Rev	132.3	142.4	158.5	164.8	196.7	213.3	227.1	269.8	
Max PSI	3500	3500	3500	3500	3500	3500	3500	1450	
CONTINUOUS PSI	3000	3000	3000	3000	3000	3000	3000	1090	
MAX RPM	2200	2200	2200	2200	2200	2200	2200	2000	
MIN RPM	600	600	600	600	600	600	600	600	

PT7B/PT7BS	Cam Ring												
	B02	B03	B04	B05	B06	B07	B08	B09	B10	B11	B12	B14	B15
GPM/1800 RPM/4650 PSI	1.72	3.62	5.07	6.53	8.37	9.64	10.80	12.26	14.11	15.59 <sub>(1)</sub>	18.52 <sub>(1)</sub>	20.34 <sub>(1)</sub>	22.85 <sub>(1)</sub>
LPM/1800 RPM/320 BAR	6.5	13.7	19.2	24.7	31.7	36.5	40.9	46.4	55.5	59.0 <sub>(1)</sub>	70.1 <sub>(1)</sub>	79.2 <sub>(1)</sub>	86.5 <sub>(1)</sub>
IN <sup>3</sup>	0.35	0.60	0.78	0.97	1.21	1.37	1.52	1.71	1.94	2.13	2.50	2.75	3.05
CC	5.7	9.8	12.8	15.9	19.8	22.5	24.9	28.0	31.8	34.9	40.9	45.1	50.0
*Max PSI	4650	4650	4650	4650	4650	4650	4650	4650	4650	4350	4350	4350	4060
CONTINUOUS PSI	4200	4200	4200	4200	4200	4200	4200	4200	4200	4000	4000	4000	3500
MAX RPM	3600	3600	3600	3600	3600	3600	3600	3600	3600	3000	3000	3000	3000
MIN RPM	600	600	600	600	600	600	600	600	600	600	600	600	400

Performance data shown throughout this catalog is a result of a series of laboratory tests and is not representative of any one unit.

\*Consult Permco for all pressure applications over 4350 PSI.

[1] Performance stated at Max RPM and MAX PSI for given cam ring.

Units tested using HF-O and HF-2 hydraulic fluid.



## EVO Vane Series Pumps Industrial and Mobile

PT7D/PT7DS	Cam Ring										
	B14	B17	B20	B24	B28	B31	B35	B38	B42	B45	B50
GPM/ 1800 RPM/ 4375 PSI	17.14	22.38	27.61	34.77	38.99	43.38	50.35 <sub>(1)</sub>	53.79 <sub>(1)</sub>	62.05 <sub>(1)</sub>	65.38 <sub>(1)</sub>	71.67 <sub>(1)</sub>
LPM/ 1800 RPM/ 302 BAR	64.9	84.7	104.5	131.6	147.6	164.2	190.6 <sub>(1)</sub>	203.6 <sub>(1)</sub>	234.9 <sub>(1)</sub>	247.5 <sub>(1)</sub>	271.3 <sub>(1)</sub>
IN <sup>3</sup> /Rev	2.68	3.36	4.03	4.95	5.49	6.05	6.92	7.36	8.39	8.89	9.64
CC/Rev	43.9	55.0	66.0	81.1	89.9	99.1	113.4	120.6	137.5	145.7	157.9
*Max PSI	4375	4375	4375	4375	4375	4375	4083	4083	3791	3500	3062
CONTINUOUS PSI	3600	3600	3600	3600	3600	3600	3600	3600	3000	3000	3000
MAX RPM	3000	3000	3000	3000	3000	3000	2800	2800	2500	2200	2200
MIN RPM	600	600	600	600	600	600	600	600	600	600	600

PT6CM	Cam Ring												
	B03	B05	B06	B08	B10	B12	B14	B17	B20	B22	B25	B28	B31
GPM/ 1000 RPM/ 3500 PSI	1.35	3.04	3.38	4.73	6.76	7.56	9.91	13.16	14.61	16.33	18.70 <sub>(1)</sub>	21.50 <sub>(1)</sub>	24.46 <sub>(1)</sub>
LPM/ 1000 RPM/ 241 BAR	5.1	11.5	12.8	17.9	25.6	28.6	37.5	49.8	55.3	61.8	70.8 <sub>(1)</sub>	81.4 <sub>(1)</sub>	92.6 <sub>(1)</sub>
IN <sup>3</sup> /Rev	0.66	1.05	1.30	1.61	2.08	2.26	2.81	3.56	3.89	4.29	4.84	5.42	6.10
CC/Rev	10.8	17.2	21.3	26.4	34.1	37.1	46.0	58.3	63.8	70.3	79.3	88.8	100.0
Max PSI	4000	4000	4000	4000	4000	4000	4000	4000	4000	4000	4000	3000	3000
CONTINUOUS PSI	3000	3500	3500	3500	3500	3500	3500	3500	3500	3500	3500	2300	2300
MAX RPM	2800	2800	2800	2800	2800	2800	2800	2800	2800	2800	2500	2500	2500
MIN RPM	400	400	400	400	400	400	400	400	400	400	400	400	400

PT6DM	Cam Ring											
	B14	B17	B20	B24	B28	B31	B35	B38	B42	B45	B50	
GPM/ 1000 RPM/ 3500 PSI	8.48	12.63	13.34	16.91	19.60	21.87	25.23	27.69	31.83	34.40	38.30	
LPM/ 1000 RPM/ 241 BAR	32.1	47.8	50.5	64.0	74.2	82.8	95.5	104.8	120.5	130.2	145.0	
IN <sup>3</sup> /Rev	2.90	3.55	4.03	4.85	5.47	6.00	6.77	7.34	8.30	8.89	9.64	
CC/Rev	47.6	58.2	66.0	79.5	89.7	98.3	111.0	120.3	136.0	145.7	158.0	
Max PSI	3500	3500	3500	3500	3500	3500	3500	3500	3500	3500	3000	
CONTINUOUS PSI	3000	3000	3000	3000	3000	3000	3000	3000	3000	3000	2300	
MAX RPM	2500	2500	2500	2500	2500	2500	2500	2500	2200	2200	2200	
MIN RPM	400	400	400	400	400	400	400	400	400	400	400	

PT6EM	Cam Ring								
	042	045	050	052	062	066	072	085	
GPM/ 1000 RPM/ 3500 PSI	30.43	33.10	37.35	39.02	47.45	51.83	55.48	70.03 <sub>(1)</sub>	
LPM/ 1000 RPM/ 241 BAR	115.2	125.3	141.4	147.7	179.6	196.2	210.0	265.1 <sub>(1)</sub>	
IN <sup>3</sup> /Rev	8.07	8.69	9.67	10.06	12.00	13.02	13.86	16.46	
CC/Rev	132.3	142.4	158.5	164.8	196.7	213.3	227.1	269.8	
Max PSI	3500	3500	3500	3500	3500	3500	3500	1450	
CONTINUOUS PSI	3000	3000	3000	3000	3000	3000	3000	1090	
MAX RPM	2200	2200	2200	2200	2200	2200	2200	2000	
MIN RPM	400	400	400	400	400	400	400	400	

Performance data shown throughout this catalog is a result of a series of laboratory tests and is not representative of any one unit.

\*Consult Permco for all pressure applications over 4350 PSI.

(1) Performance stated at Max RPM and MAX PSI for given cam ring.

Units tested using HF-0 and HF-2 hydraulic fluid.



## EVO Vane Series Motors

PM4C	Cam Ring						
	024	027	031	043	055	067	075
INPUT GPM @ 2500 PSI = 2000 RPM	17.70	19.55	22.98	29.32	35.93	42.27	47.02
INPUT LPM @ 172 BAR = 2000 RPM	67.0	74.0	87.0	111.0	136.0	160.0	178.0
IN <sup>3</sup> /Rev	1.49	1.72	2.11	2.84	3.59	4.34	4.89
CC/Rev	24.4	28.2	34.5	46.5	58.8	71.1	80.1
Max PSI	2500	2500	2500	2500	2500	2500	2500
TORQUE 2500 PSI 2000 RPM = IN-LBS	535	620	768	1062	1319	1504	1752
MAX RPM CONTINUOUS	2500	2500	2500	2500	2500	2500	2500
MAX RPM INTERMITTENT	3600	3600	3600	3600	3600	3600	3600

PM4D	Cam Ring						
	062	074	088	102	113	128	138
INPUT GPM @ 2500 PSI = 2000 RPM	40.68	47.02	54.42	63.67	67.89	76.35	82.69
INPUT LPM @ 172 BAR = 2000 RPM	154.0	178.0	206.0	241.0	257.0	289.0	313.0
IN <sup>3</sup> /Rev	3.97	4.69	5.56	6.44	7.12	8.08	8.81
CC/Rev	65.1	76.8	91.1	105.5	116.7	132.4	144.4
Max PSI	2500	2500	2500	2500	2500	2500	2500
TORQUE 2500 PSI 2000 RPM = IN-LBS	1460	1770	2089	2336	2655	3009	3292
MAX RPM CONTINUOUS	2500	2500	2500	2500	2500	2500	2500
MAX RPM INTERMITTENT	3000	3000	3000	3000	3000	3000	3000

PM4E	Cam Ring		
	153	185	214
INPUT GPM @ 2500 PSI = 2000 RPM	90.61	108.1	124.2
INPUT LPM @ 172 BAR = 2000 RPM	343.0	409.0	470.0
IN <sup>3</sup> /Rev	9.67	11.69	13.55
CC/Rev	158.5	191.6	222.0
Max PSI	2500	2500	2500
TORQUE 2500 PSI 2000 RPM = IN-LBS	3522	4283	5018
MAX RPM CONTINUOUS	2500	2500	2500
MAX RPM INTERMITTENT	3000	3000	3000

Permco offers a complete line of hydraulic vane pumps, motors and thru drives in  
singles, doubles and triples; available units as follows.

**Singles:**

PT6C  
PT6CM  
PT6D  
PT6DM  
PT6DS  
PT6DSM  
PT6E

PT6EM  
PT6GC  
PT7B  
PT7BS  
PT7D  
PT7DS

**Doubles:**

PT6CC  
PT6CCM  
PT6DC  
PT6DCM  
PT6DDS  
PT6DDSM  
PT6EC  
PT6ECM  
PT6ED

PT6EDM  
PT6EE  
PT6EES  
PT6GCC  
PT6QDC  
PT67CB  
PT67DB  
PT67EB  
PT67DCM

**Triples:**

PT6DCC  
PT6DDCM  
PT6DDCS  
PT6DDCSM  
PT6EDC

**Thru Drives:**

PT6CR  
PT6CRM  
PT6DR  
PT6DRM  
PT6ER

**Motors:**

PM4C  
PM4D  
PM4E

**DDKS**  
INDUSTRIES



586-323-5909

